



FATEK IoT iAccess Insight User Manual

V1.0

2020/8/3

Catalogue

Catalogue.....	2
Figures	3
Tables.....	4
1. iAccess Insight Remote Maintenance.....	5
2. Device Activate Process	6
2.1 FATEK IoT System Setting.....	7
2.2 Setup Device Group	8
3. Software Interface	9
3.1 Login.....	9
3.2 Device Group.....	10
3.3 Remote Function List	11
3.3.1 Remote Download	12
3.3.2 Remote Upload	13
3.3.3 Pass Through.....	14
3.3.4 Remote HMI Monitoring.....	15

Figures

Figure 1 iAccess remote maintenance	5
Figure 2 iAccess setting process.....	5
Figure 3 Website management system configuration	6
Figure 4 HMI Servers/IoT setting	7
Figure 5 iAccess supported functions	8
Figure 6 Add device.....	8
Figure 7 Add device group	9
Figure 8 Login screen	9
Figure 9 Device Group List	10
Figure 10 Remote function	11
Figure 11 Remote download.....	12
Figure 12 Remote upload.....	13
Figure 13 Pass Through	14
Figure 14 Enable Viewer function.....	15
Figure 15 Viewer real-time screen.....	15

Tables

Table 1 HMI Servers/IoT setting	7
Table 2 Login screen	10
Table 3 Device Group	10
Table 4 Remote function	11

1. iAccess Insight Remote Maintenance

iAccess Insight provides remote maintenance function, makes user can easily to remote maintain the HMI without a physical IP.

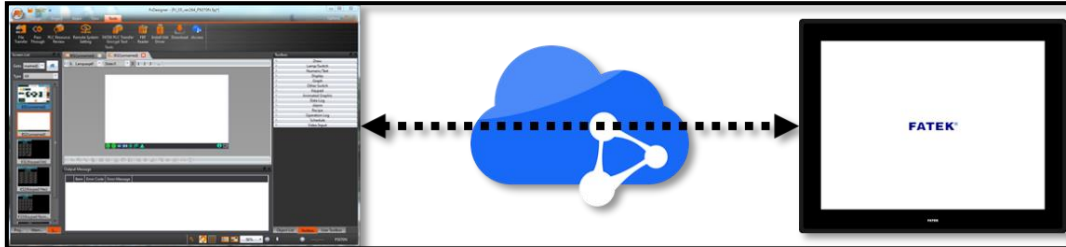


Figure 1 iAccess remote maintenance

To use iAccess service, each device needs a unique LID. The LID can't transfer to other devices after the device has been activated.

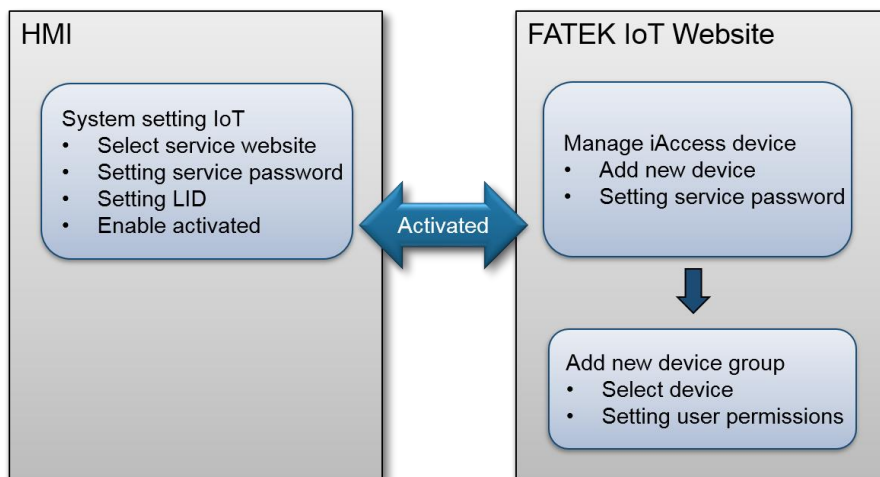


Figure 2 iAccess setting process

2. Device Activate Process

FATEK IoT Website Link: <https://fatekcloud.net/login>

Before using FATEK IoT service, users need to submit the application to FATEK and will get Customer ID and User Admin to log in to the website management system to do the configuration.

The screenshot shows a web interface for configuring iAccess Devices. On the left is a sidebar menu with the following items: 'calvinwu' (username), 'Services' (containing iMonitor, iAccess, and iLocation), 'Management' (containing User, iMonitor DataItems, iAccess Devices, and Resource Usage), and 'Resource Usage'. The main content area is titled 'iAccess Devices > Device' and contains a form with the following fields: 'Name' (text input), 'Product Type' (dropdown menu with 'Select...' option), 'Service Password' (text input), 'Hardware ID' (text input), 'Description A' (text area), and 'Description B' (text area). A circular icon representing a device is positioned to the left of the form fields.

Figure 3 Website management system configuration

2.1 FATEK IoT System Setting

-Enter the HMI system setting page, click “Servers/IoT” and check the “Enable IoT Service”.

-Set the service password and LID, click the  icon to refresh, make sure the  icon stays green(connecting).

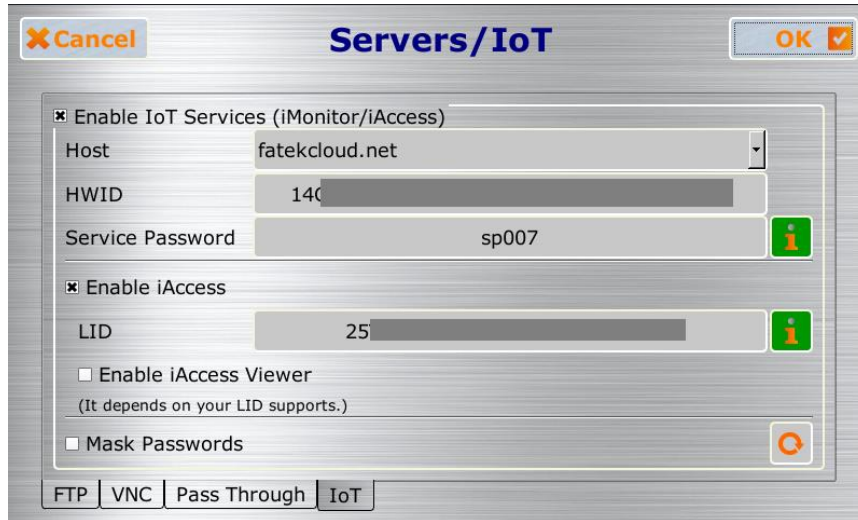



Figure 4 HMI Servers/IoT setting

Table 1 HMI Servers/IoT setting

Item	Description
Enable IoT Service	Check the checkbox to enable iMonitor and iAccess.
Host	Select the apply server. China User: fatekiot.cn World Wide User: fatekcloud.net
HWID	Read only and unique ID code, it must be set when setting up the device on the FATEK IoT website to represent this HMI has been register to FATEK IoT.
Service Password	Service Password for iMonitor and iAccess, user can set it up. When setting up the device on FATEK IoT website, needs to field up the same service password to activate iMonitor or iAccess.
Enable iAccess	Check the checkbox to enable iAccess.
LID	Authentication code for iAccess, need to get LID through dealer.
Enable iAccess Viewer	According to different LID will affect whether this function is provided or not.
Mask Password	Display or mask the password.

Click iAccess  icon and will pop up the supported function window.

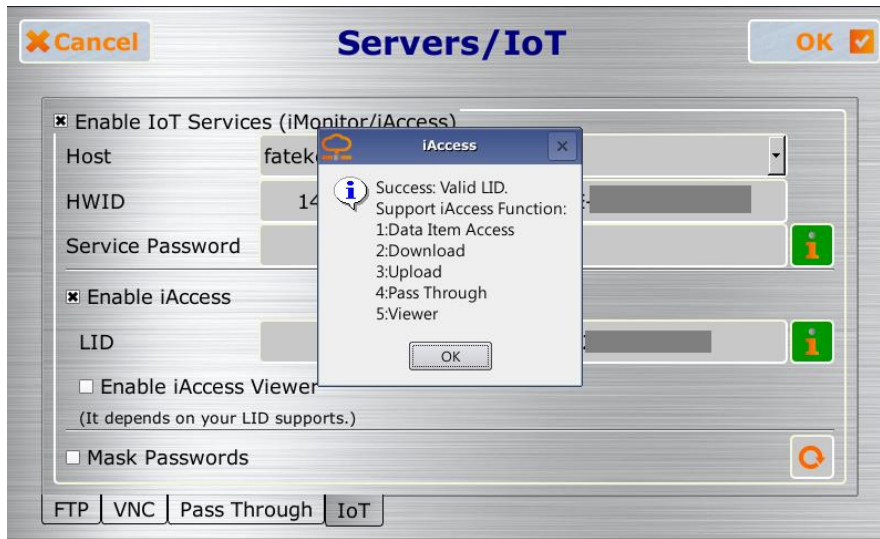


Figure 5 iAccess supported functions

2.2 Setup Device Group

Login to FATEK IoT Website, setup each iAccess device first then set up the iAccess device group, after complete setting up those steps then can log into iAccess Insight to select the device to connect.

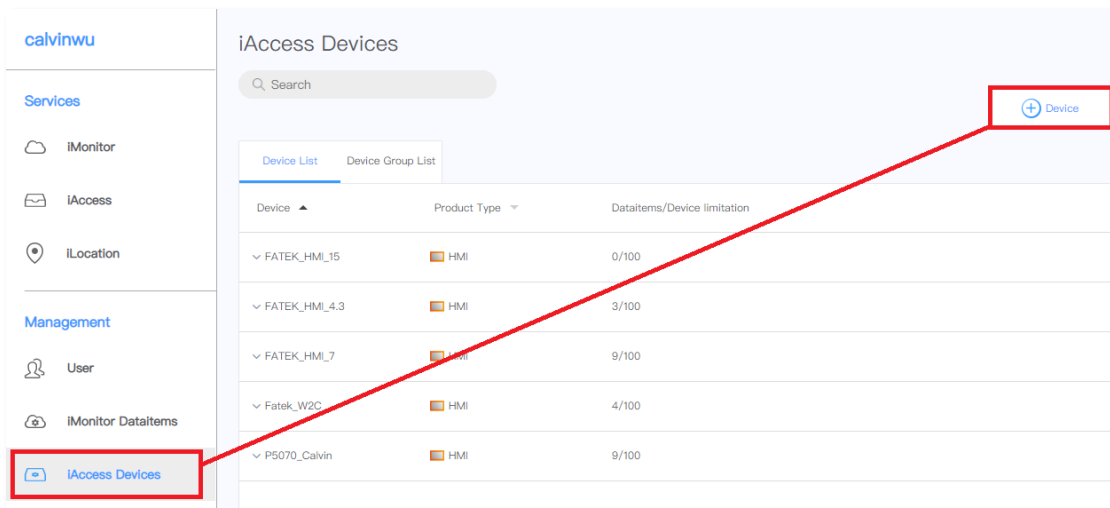


Figure 6 Add device

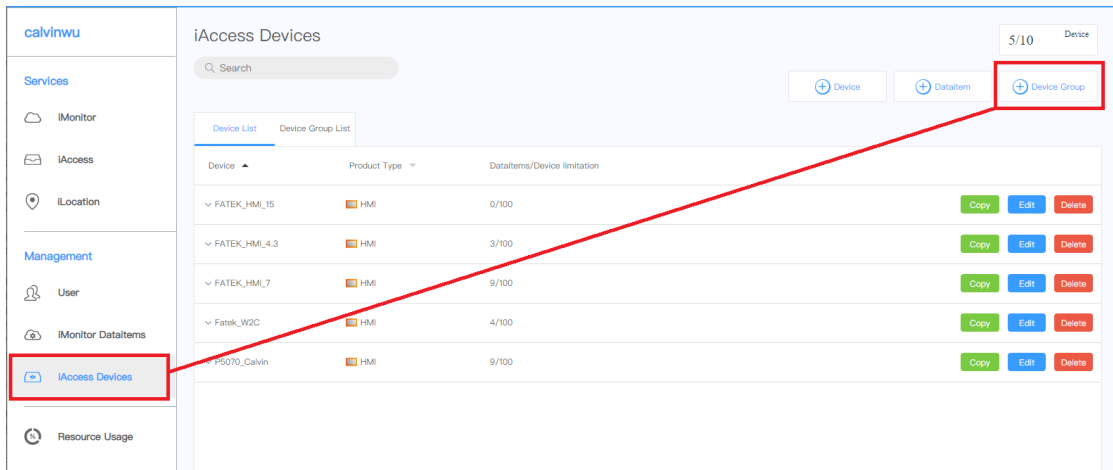


Figure 7 Add device group

3. Software Interface

3.1 Login



Figure 8 Login screen

Table 2 Login screen

Item	Description
Project	User login project.
Account (Email)	User login account.
Password	User login password.
Server	Select the applied server.
Forget Password	Reset password.
Language	Provide English, Traditional Chinese, Simplified Chinese, and Türkçe.

3.2 Device Group

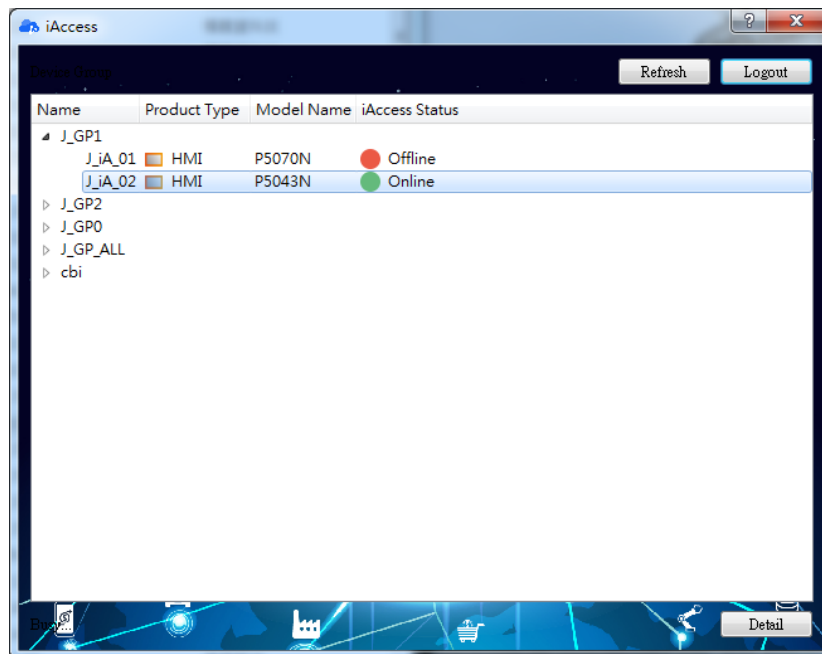


Figure 9 Device Group List

Table 3 Device Group

Item	Description
Name	Device name, need to login to the website to set.
Product Type	Display the product type.
Model Name	Display the group's model name.
iAccess Status	Display the current status of the device.
Refresh	Refresh the device status.
Logout	Logout the account.
Detail	Select the device then enter the remote function page.

3.3 Remote Function List

Provide 4 functions: Download, Upload, Pass Through, and Viewer.



Figure 10 Remote function

Table 4 Remote function

Item	Description
Name	Device name.
Model	Display the device model.
Firmware version	Display the device firmware version.
OS version	Display the device OS version.
Env version	Display the device environment package version.
iAccess Status	Display the connect status.
iAccess LID	Display the LID type.

3.3.1 Remote Download

Provide users to download HMI project remotely.

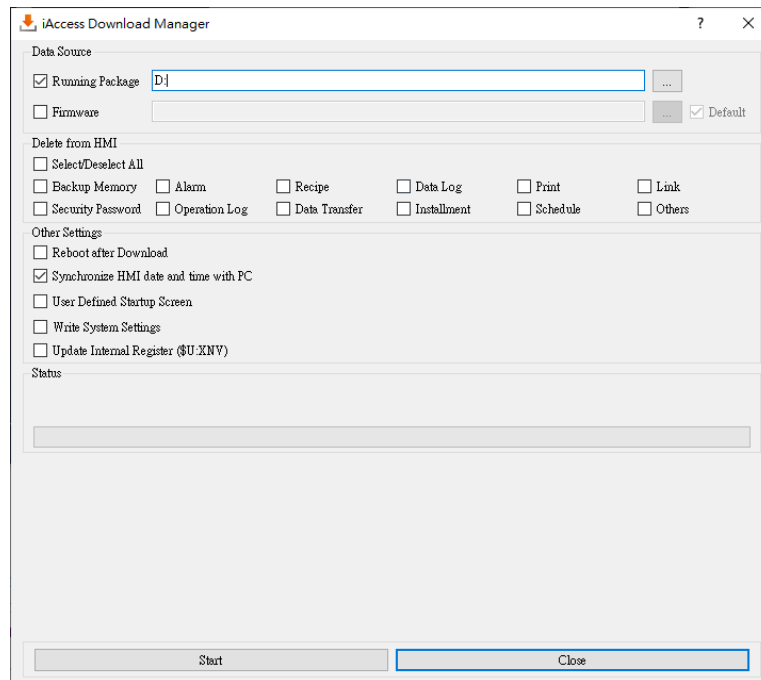


Figure 11 Remote download

Note: Refer to the FvDesigner manual for the detail settings of the **【Download】** .

3.3.2 Remote Upload

Provide users to upload HMI project remotely.

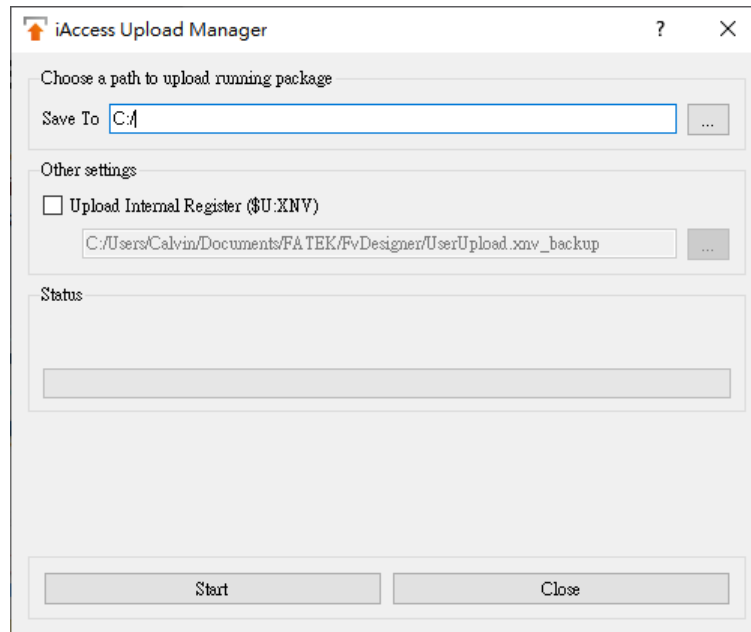


Figure 12 Remote upload

Note: Refer to the FvDesigner manual for the detail settings of the **【Upload】**.

3.3.3 Pass Through

Users can use passthrough to communicate with the PLC that is connect with the remote HMI.

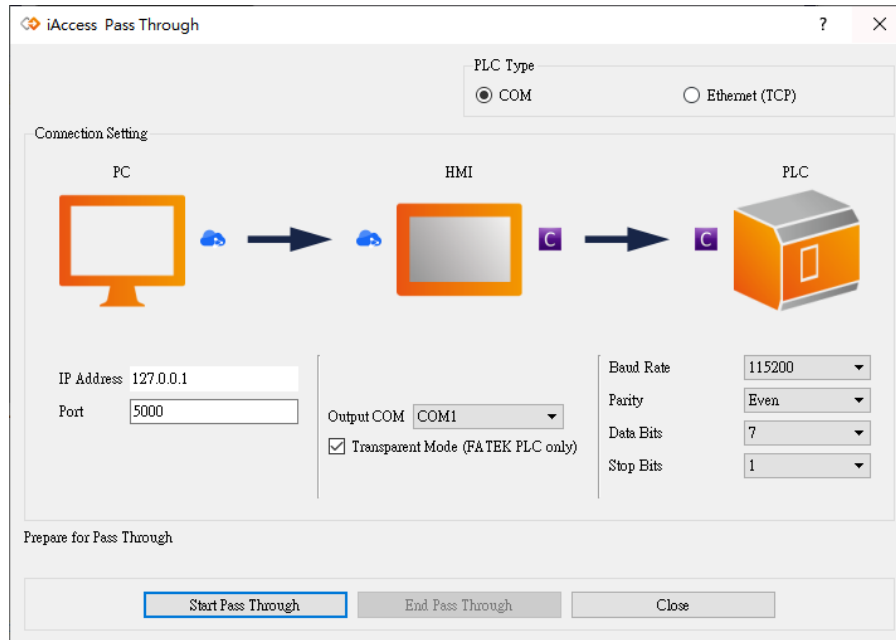


Figure 13 Pass Through

Note: For the detail settings, please refer to the FvDesigner manual **【Pass Through】** .

3.3.4 Remote HMI Monitoring

Provide users to monitor through remote connection without setting the fixed IP.

To enable this function, go to HMI system setting-> Servers/IoT, check to enable iAccess Viewer.

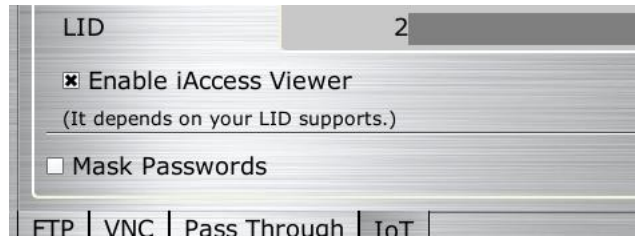


Figure 14 Enable Viewer function

Real-time monitoring HMI screen.

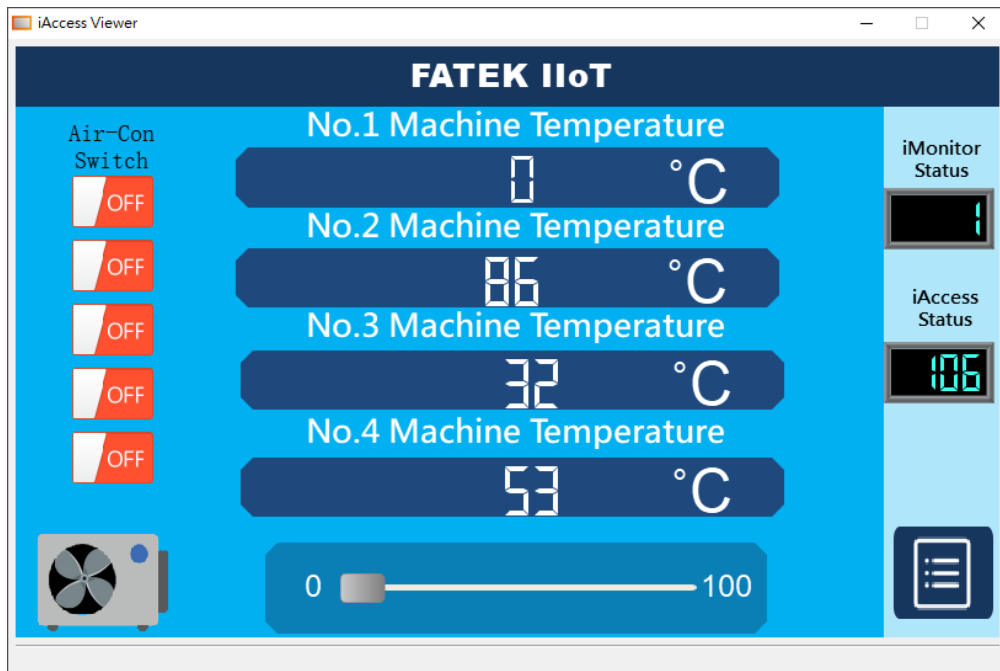


Figure 15 Viewer real-time screen